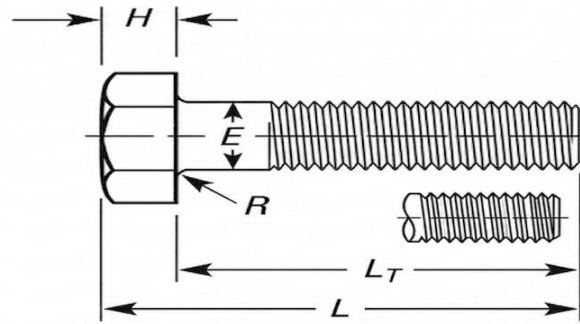
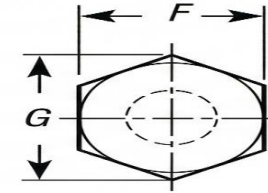


Bolt with Reduced Diameter Body



Bolt with Full-Length Thread



Hex Head

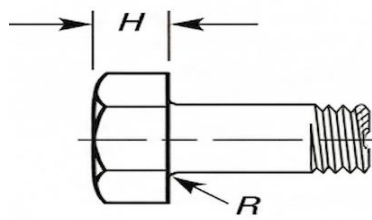
www.sunmach.net  
info@sunmach.in  
+91 20 24231345/46

### Dimensions of Hex Head Screw

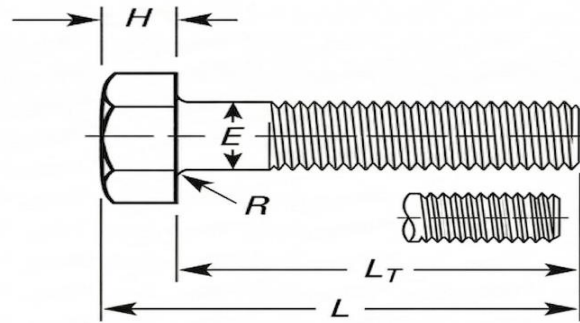
ANSI B 18.2.1-2012

Nominal Size or Basic Product Diameter		E		F			G		H			R		L <sub>T</sub>	
		Full-size Body Diameter		Width Across Flats			Width Across Corners		Height			Radius of Fillet		Nominal Thread Length for Bolt Lengths	
		Max.	Min.	Basic	Max.	Min.	Max.	Min.	Basic	Max.	Min.	Max.	Min.	6 in. and Shorter	Over 6 in.
1/4	0.2500	0.260	0.237	7/16	0.438	0.425	0.505	0.484	11/64	0.188	0.150	0.03	0.01	0.750	1.000
5/16	0.3125	0.324	0.298	1/2	0.500	0.484	0.577	0.552	7/32	0.235	0.195	0.03	0.01	0.875	1.125
3/8	0.3750	0.388	0.360	9/16	0.562	0.544	0.650	0.620	1/4	0.268	0.226	0.03	0.01	1.000	1.250
7/16	0.4375	0.452	0.421	5/8	0.625	0.603	0.722	0.687	19/64	0.316	0.272	0.03	0.01	1.125	1.375
1/2	0.5000	0.515	0.482	3/4	0.750	0.725	0.866	0.826	11/32	0.364	0.302	0.03	0.01	1.250	1.500
5/8	0.6250	0.642	0.605	15/16	0.938	0.906	1.083	1.033	27/64	0.444	0.378	0.06	0.02	1.500	1.750
3/4	0.7500	0.768	0.729	1-1/8	1.125	1.088	1.299	1.240	1/2	0.524	0.455	0.06	0.02	1.750	2.000
7/8	0.8750	0.895	0.852	1-5/16	1.312	1.269	1.516	1.447	37/64	0.604	0.531	0.06	0.02	2.000	2.250
1	1.0000	1.022	0.976	1-1/2	1.500	1.450	1.732	1.653	43/64	0.700	0.591	0.09	0.03	2.250	2.500
1-1/8	1.1250	1.149	1.098	1-11/16	1.688	1.631	1.949	1.859	3/4	0.780	0.658	0.09	0.03	2.500	2.750
1-1/4	1.2500	1.277	1.223	1-7/8	1.875	1.812	2.165	2.066	27/32	0.876	0.749	0.09	0.03	2.750	3.000
1-3/8	1.3750	1.404	1.345	2-1/16	2.062	1.994	2.382	2.273	29/32	0.940	0.810	0.09	0.03	3.000	3.250
1-1/2	1.5000	1.531	1.470	2-1/4	2.250	2.175	2.598	2.480	1	1.036	0.902	0.09	0.03	3.250	3.500
1-5/8	1.6250	1.658	1.591	2-7/16	2.438	2.356	2.815	2.616	1-3/32	1.116	0.978	0.09	0.03	3.500	3.750

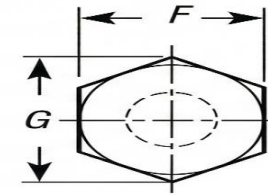
NOTE: ALL DIMENSIONS ARE IN INCHES.



Bolt with  
Reduced Diameter  
Body



Bolt with  
Full-Length Thread



Hex Head

### Dimensions of Hex Head Screw

ANSI B 18.2.1-2012

Nominal Size or Basic Product Diameter		E		F			G		H			R		L <sub>T</sub>	
		Full-size Body Diameter		Width Across Flats			Width Across Corners		Height			Radius of Fillet		Nominal Thread Length for Bolt Lengths	
		Max.	Min.	Basic	Max.	Min.	Max.	Min.	Basic	Max.	Min.	Max.	Min.	6 in. and Shorter	Over 6 in.
1-3/4	1.7500	1.785	1.716	2-5/8	2.625	2.538	3.031	2.893	1-5/32	1.196	1.054	0.12	0.04	3.750	4.000
1-7/8	1.8750	1.912	1.839	2-13/16	2.812	2.719	3.248	3.099	1-1/4	1.276	1.130	0.12	0.04	4.000	4.250
2	2.0000	2.039	1.964	3	3.000	2.900	3.464	3.306	1-11/32	1.388	1.175	0.12	0.04	4.250	4.500
2-1/4	2.2500	2.305	2.214	3-3/8	3.375	3.262	3.897	3.719	1-1/2	1.548	1.327	0.19	0.06	4.750	5.000
2-1/2	2.5000	2.559	2.461	3-3/4	3.750	3.625	4.330	4.133	1-21/32	1.708	1.479	0.19	0.06	5.250	5.500
2-3/4	2.7500	2.827	2.711	4-1/8	4.125	3.988	4.763	4.546	1-13/16	1.869	1.632	0.19	0.06	5.750	6.000
3	3.0000	3.081	2.961	4-1/2	4.500	4.350	5.196	4.959	2	2.060	1.815	0.19	0.06	6.250	6.500
3-1/4	3.2500	3.335	3.210	4-7/8	4.875	4.712	5.629	5.372	2-3/16	2.251	1.936	0.19	0.06	6.750	7.000
3-1/2	3.5000	3.589	3.461	5-1/4	5.250	5.075	6.062	5.786	2-5/16	2.380	2.057	0.19	0.06	7.250	7.500
3-3/4	3.7500	3.858	3.726	5-5/8	5.625	5.437	6.495	6.198	2-1/2	2.572	2.241	0.19	0.06	7.750	8.000
4	4.0000	4.111	3.975	6	6.000	5.800	6.928	6.612	2-11/16	2.764	2.424	0.19	0.06	8.250	8.500

NOTE: ALL DIMENSIONS ARE IN INCHES.